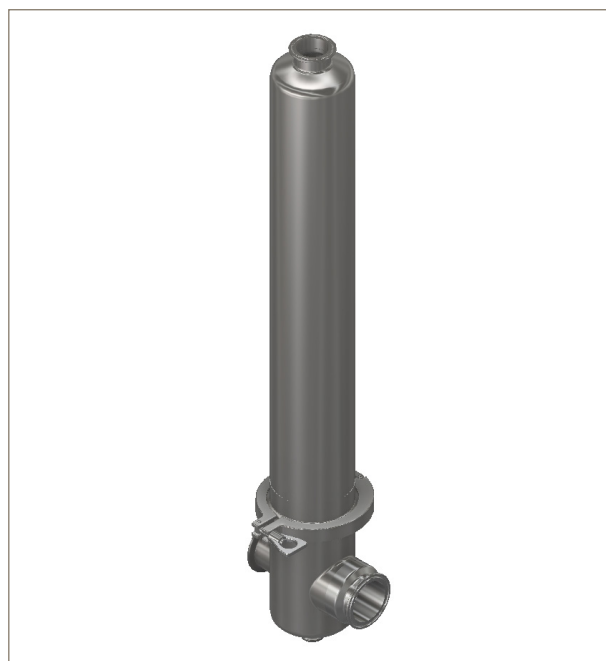




## PHS Single and Demi Filter Housings

Air / Gas Filtration

- Flow efficient range of air and gas housings designed for food and beverage and biopharmaceutical applications
- Demi (TRUESEAL) and K-40'' (226) housings
- Range of surface finish specifications
- Full material traceability
- Food grade compliance EC 1935/2004



### Specifications

#### Materials of Construction

Housing: 316L/1.4404

#### Surface Finish

Internal Upstream: Mechanical polishing <0.8µm Ra  
Internal Downstream: Mechanical polishing <0.8µm Ra  
Mechanical polishing <0.4µm Ra  
External: Mechanical mirror polishing

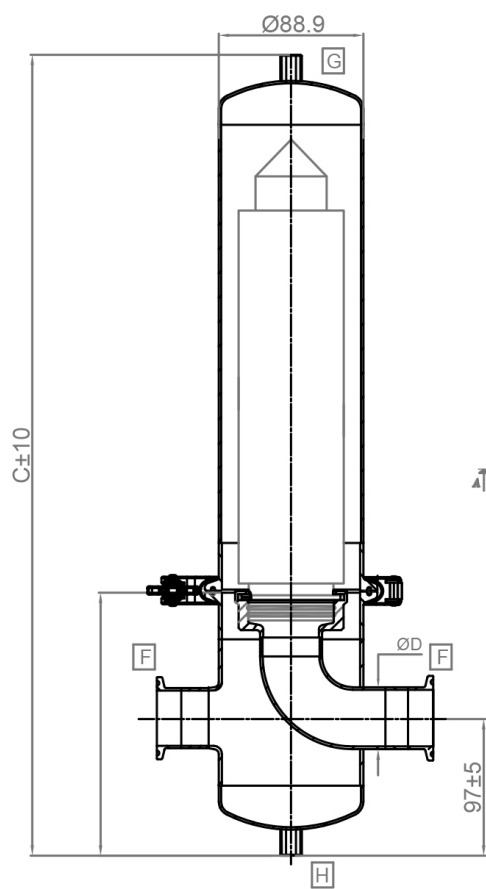
Cartridge Socket: C (226), TRUESEAL  
Number of Cartridges: 1

#### Technical Design Data

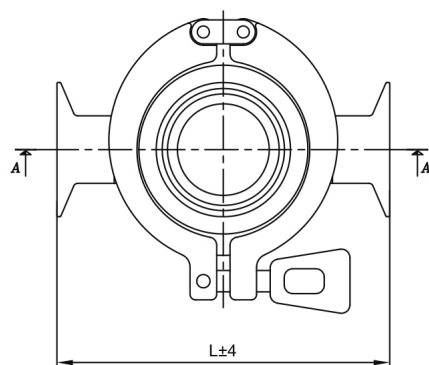
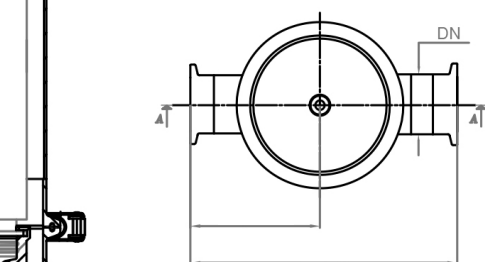
Design Code: PED 2014/68/EU  
PED Category: SEP (Art 4.3)  
CAT 1 for PHS 30'' and 40''  
PHS Demi Group 1 & 2  
PHS K-40'' Group 2 only  
PED Fluid Group: Gas  
PED Fluid State: Gas  
ATEX Regulation: Group 2, CAT 2 Gas & Dust  
Fluid GR IIC, Zone 1 & 21

Design Pressure: -1 to 10 bar at -20°C to 150°C

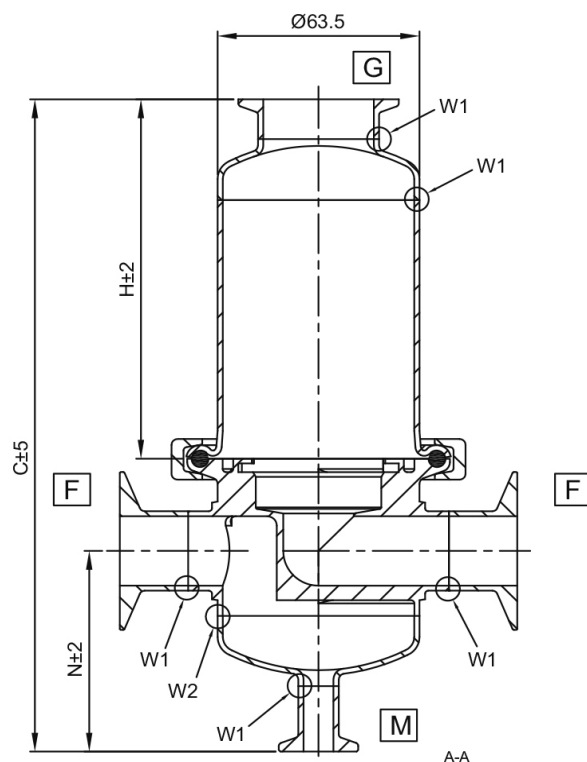
## Dimensions



Model	K	10"	20"	30"	40"
Cartridges number x Height (inches)	0.1 x 05"	01 x 10"	01 x 20"	01 x 03"	01 x 40"
PED category	Art. 4.3	Art. 4.3	Art. 4.3	I	I
C mm (with vent)	380	500	750	1000	1250
Total vessel volume litres	2.2	3.0	4.0	6.0	7.0
Bowl weight kg	0.7	1.1	1.9	2.7	3.5
Total net weight kg	2.6	3.0	4.0	5.0	6.0
Total weight packed kg	3.6	4.0	5.0	6.0	7.0



Dimensional Data		
In/out connection	TC 1.0"	
Cartridge height	2.5"	5"
PED Category	Art. 4.3	Art. 4.3
C (mm)	212	268
H (mm)	111	167
N (mm)	67	67
L (mm)	92	92



## Ordering Information

### PHS Gas Housing

Code		Cartridge Number		Code		Socket		Code		Closure		Code		Vent		Code		Internal Roughness *		Code		Plugs	
01		1	cartridge	7		Code C		C		Clamp		1		1.5" TC		8		Ra <0.8 micron		0		No plugs	
4																		Ra <0.4 micron					
PHS		X	XX	X	X	X	X	X	X	X	X	X	X	X	X	X	XXXX	X					
Code		Pressure rating		Code		Length (Nominal)		Code		Gasket Material		Code		Drain		Code		Finishing		Code		Inlet / Outlet	
0		10	bar	K		5" (125mm)		S		Silicone		9		1/2" TC		M		Mechanical polish		T015		Clamp ASME BPE 1.5"	
				1		10" (250mm)														T020		Clamp ASME BPE 2"	
				2		20" (500mm)														W038		Weld ASME BPE 38.1 x 1.65	
				3		30" (750mm)														W051		Weld ASME BPE 50.8 x 1.65	
				4		40" (1000mm)																	

### PHS Demi Gas Housing

Code		Cartridge Number		Code		Socket		Code		Closure		Code		Vent		Code		Internal Roughness *		Code		Plugs	
01		1	cartridge	T		TRUESEAL		C		Clamp		1		1.5" TC		8		Ra <0.8 micron		0		No plugs	
4																		Ra <0.4 micron					
PHS		X	XX	X	X	X	X	X	X	X	X	X	X	X	X	X	XXXX	X					
Code		Pressure rating		Code		Length (Nominal)		Code		Gasket Material		Code		Drain		Code		Finishing		Code		Inlet / Outlet	
0		10	bar	A		5" (127mm)		S		Silicone		9		1/2" TC		M		Mechanical polish		T010		Clamp ASME BPE 1"	
				B		2.5" (64mm)		E		EPDM													
								V		Viton													
								P		FEP+ Silicone													

\* Internal roughness 0.4µm Ra / 0.8µm Ra is guaranteed on downstream only.

\* Vent and drain plugs/blanks not supplied as standard, available as separate parts.



Parker has a continuous policy of product development and although the company reserves the right to change specifications, it attempts to keep customers informed of any alterations. This publication is for general information only and customers are requested to contact our sales department for detailed information and advice on a products suitability for specific applications. All products are sold subject to the company's standard of sale.