

MEGAPLEAT Cartridge filter for high flow system

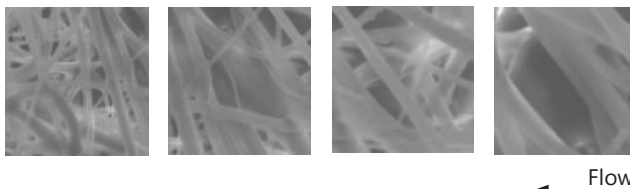


- High surface area design provides excellent flow rates and extended service life while maintaining high particle removal efficiency.
- Inside to outside flow configuration all contaminants held within the filter.
- Coreless construction to minimize waste disposal.
- Absolute rated filter medium.
- Multi-layered design provides gradient filtration.
- Available in 20", 40" and 60" lengths.
- Connections and dimensions of cartridges standard for HFU Pall.
- Economically designed handle facilities fast and easy installation and remove without special tools.

MEGAPLEAT cartridge filter is constructed by 6" diameter, reduces the number of filters and size of housing required. Cartridge is coreless, single open-ended which can be wide used in different applications.

Filter is available in wide scale of absolute ratings, covering full range of filter requirements in industrial, food and beverage, pharmaceutical, chemical, petrochemical and electronics industries.

The filter utilizes multi-layer filter medium, with graded pore size from coarse (upstream) to fine (downstream), offer higher dirty holding capacity.

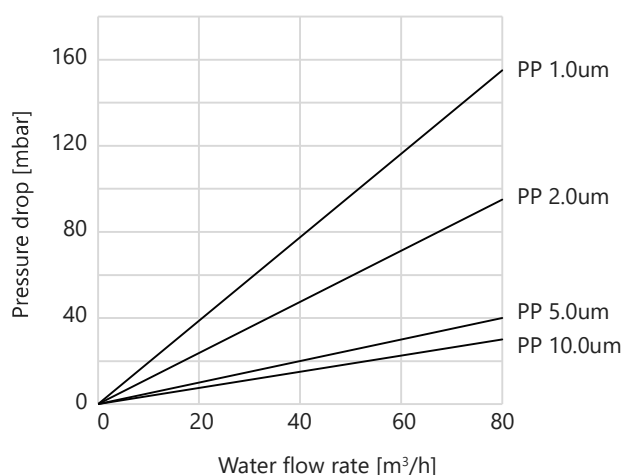


Contact with food

All component material meet the FDA indirect food additive requirements cited in 21CFR 177-182. All component material meet the requirement of the EU regulation 1935/2004/EC.

Flow rate characteristics

For single filter 60" length, water at 20°C.



MEGAPLEAT Cartridge filter for high flow system

Material of construction and max. working temperature

Filter media	:	polypropylene, T=82°C glass fiber, T=110°C polyester, T=90°C PES membrane, T=82°C
Endcaps	:	polypropylene with glass fiber, T=100°C acetal with glass fiber, T=120°C
Support / drainage	:	polyester, T=110°C

Recommended operating conditions

Max. pressure drop	:	$\Delta P = 3,5$ bar (flow from inside to outside)
Suggested changeout pressure	:	$\Delta P < 2$ bar

Ordering information

Type	Filter media	O.D.	Length [inch]	Micron rating**	O-ring
<input type="checkbox"/>	PP = Polypropylene	150	2 = 20	002 = 0,2	B = NBR
	GF = Glass fiber		4 = 40	004 = 0,45	E = EPDM
	PE = Polyester		6 = 60	006 = 0,5	S = Silicone
	PES = PES membrane			008 = 0,8	V = Viton
				010 = 1	
				020 = 2	
				030 = 3	
				050 = 5	
				100 = 10	
				150 = 15	
				200 = 20	
				400 = 40	
				700 = 70	
				900 = 90	

** available efficiency depend on the type of filter media

CHT_01_17/v.02